



PRINCESS PATTERN

Your daily guide to life at sea

Embark Wednesday, June 1, 2016 • Island Princess • Tonight's dress: Smart Casual

Weather: Today's Forecast: Cloudy – High: 15°C (59°F) Low: 9°C (48°F) – Sunrise 4:35am/Sunset 11:12pm

Tomorrow's Forecast: Partly Cloudy – High: 12°C (54°F) Low: 8°C (48°F)

Access island.princess.com • Free of charge on your laptop, iPad or any mobile device while onboard

Welcome aboard Island Princess®

Ship's officers

Andrea Poggi
Captain

Cho Di Simone
Staff Captain

Francesco Russo
Chief Engineer

Giuseppe Manfredi
Guest Services Manager

John White
Cruise Director

Louis Conrads
Senior Doctor

Carla Ramos
Customer Services Director

Wolfgang Juranek
Food & Beverage Director

Rosario Maccherone
Staff Engineer Officer

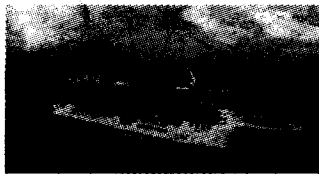
Marah Francisco Ptech
Staff Electro-technical Officer

David Marchesin
Environmental Officer

Antonio Pimpeo
Executive Housekeeper

Jeremy Snowden
Executive Chef

Navita Saldanha
Bartending Director



Welcome aboard the spectacular Island Princess®, where comfortable elegance and an incredible variety

of activities, dining and entertainment options await. Stop by La Pâtisserie for a latte or specialty coffee drink, browse the masterpieces on display in the Art Gallery and stop by the Internet Café to stay in touch with home.

If you're in the mood for serenity, you may choose to spend your day at The Sanctuary, our tranquil haven exclusively for adults. Or perhaps you'd enjoy some pampering at the Lotus Spa®, or a chance to unwind poolside. These refreshing experiences can be the prelude to the delicious temptations of fine Italian cuisine at Sabatini'sSM. Or perhaps you'd like the unique experience of listening to live jazz as you taste the flavorful Cajun and Creole dishes served inside the Bayou Café & Steakhouse. After dessert, the excitement continues. An array of activities, including our thrilling Princess Casino, captivating Princess Signature Shows and the big-screen action of Movies Under the Stars®, offers you dazzling options for entertainment throughout the ship.

With so much to discover and enjoy you're sure to find an enriching experience on board Island Princess ensuring you Come Back New.

8:00pm – All aboard Island Princess sets sail
shortly thereafter.

From the Navigator

On departure from Whittier, Island Princess will sail the waters of the Passage Canal. Overnight we navigate Well's Passage, transit Prince William Sound and head out into the open waters of the Gulf of Alaska via Cape Hinchinbrook (Waypoint 16; page 208).

*Waypoints may be found on the Alaska Cruise Companion Map and page numbers reference the Alaska Cruise Companion Book.



Princess@Sea

Your FREE, mobile-friendly connection to shipboard information and account details. Login using any smartphone, tablet or computer. It's as easy as 1-2-3.

- 1 Turn your device on airplane mode
- 2 Connect to the ship's WiFi (Island-Princess)
- 3 Type in island.princess.com on your web browser and enjoy Princess@Sea!

- View Today's Events & Activities
- Access Your Stateroom Account
- View the Ship's Itinerary and Port Guides
- Learn about Venue Details - Location, hours, and menus for restaurants

Head Help Please visit the Passenger Services Desk or Reception Café for assistance.

A complete list of today's happenings are inside. Look for Princess Pick events.

Find your new favorite something.



Itinerary Highlights

= Time Change

Day	Port	Dress	Arrival	All Aboard
Wednesday, June 1, 2016	Whittier	Smart Casual		8:00pm
Thursday, June 2, 2016	Yakutat Bay - Hubbard Glacier	Formal	Scenic Cruising (Approx. 3:00pm-8:00pm)	
Friday, June 3, 2016	Glacier Bay	Smart Casual	Scenic Cruising (Approx. 9:15am-7:30pm)	
Saturday, June 4, 2016	Skagway	Smart Casual	6:00am	8:00pm
Sunday, June 5, 2016	Juneau	Formal	6:30am	3:30pm
Monday, June 6, 2016	Ketchikan	Smart Casual	10:00am	5:30pm
Tuesday, June 7, 2016	At Sea	Smart Casual	-	-
Wednesday, June 8, 2016	Vancouver	Smart Casual	7:30am	-

Please Note: Arrival and departure times are subject to change.

This Cruise's Entertainment Highlights (Events are subject to change: Please check our daily Patter for times)

Princess Theater
 Comedian: Phil Tag
 Ventriloquist: Michael Minor
 The Voice of the Ocean
 Production Shows:
 Do You Wanna Dance
 Motor City
 On The Bayou

Explorers Lounge
 Yes/No Gameshow
 Cruise Cult Classic:
 "Rock & Roll Night"
 Marriage Match Gameshow
 Pub Night

NORTH TO ALASKA

Destination Expert: Mark Harris
 Juneau in Port Presenter: Iditarod Champion - Libby Riddles
 Skagway: Steve Hites "North to Alaska"
 Puppies in the Atrium
 Enrichment Presenter - Nick Jans
 Klondike Night Party
 Midnight Sun Experience
 Harmonica Class
 Arts & Crafts: Gold Bracelet Making

Discovery at SEA

Discovery@Sea Showcase
 Finding Big Foot
 Oceans Trivia
 Animal Planet Trivia
 Space Trivia

movies

Bridge of Spies
 Concussion (2015)
 Daddy's Home
 Star Wars: The Force Awakens
 Brooklyn
 The Martian

Relaxing Afternoon

Noon- 11:00pm **Lotus Spa, Salon Open House** - Enjoy a tour of your onboard Spa, Salon. Enter to win a Lotus Spa raffle of up to \$500 in Spa credits. Lotus Spa, Deck 14 Aft

Noon **movies** **Concert: Genesis Invisible Touch**
 Lido, Deck 14 Midship

Noon- 9:00pm **Guess The Price Of The Peter Max** - Enter for your chance to win a fantastic art prize! Art Gallery, Deck 7

Noon- 10:00pm **Welcome Aboard Presentation**
 Stateroom TV, Channel 21

Noon- Onwards **Safety Presentation**
 Stateroom TV, Channel 22

12:15pm- 3:15pm *In the Atrium* **Welcome Aboard Melodies with the Island Princess Musicians.** Deck 5

1:00pm

movies

Concert: Paul McCartney
 Good Evening New York City
 Lido, Deck 14 Midship

1:00pm- 9:00pm

Meet Your Fitness Trainer Radu - Find out how to stay in shape during your cruise. Aerobics/Fitness Center, Deck 6 Aft

2:00pm

movies

Concert: Billy Joel
 Live at Shea Stadium Lido Deck 14

3:00pm- 7:00pm

Foot Print and Posture Analysis
 Aerobics/Fitness Center, Deck 6 Aft

3:00pm

movies

Movie: Ant Man
 Starring: Paul Rudd, Michael Douglas
 (PG-13 • 1hr. 58mins.) Lido, Deck 14

3:00pm- 7:00pm

Acupuncture Clinic - Free walk in Acupuncture consultations with Larry, La.C. Lotus Spa, Deck 14 Aft



The Lotus Spa

Thermal Suite

...to the spa... today!
 ...the four... relax
 ...treat & saunas.

7 Day Pass:

Single Pass \$150 • Couples Pass \$249

Lotus Spa • Deck 14 Aft - Ext 14626

Princess Captain's Circle

Welcome Back

to all Princess Cruises Captain's Circle Gold, Ruby, Platinum and Elite Members!
 Tracey, your Princess Captain's Circle Hostess is onboard to assist you.

Atrium, Deck 5 Midship

\$\$\$ Princess Casino

Use Your Cruise Card

Now use your Cruise Card to purchase casino slot credits and table chips up to \$3,000 per day - no extra fees apply.

Casino • Deck 6 Midship

come back new

4:00pm-7:00pm **The \$1000 Treasure Hunt** – Collect all stamps on your Treasure Hunt Card and bring it to the draw tomorrow at Noon in the Atrium, Deck 5 Midship, to qualify to win one of the featured prizes! Please check the Princess Patter for opening times. Princess Pick

4:00pm-7:00pm **Meet your Casino Host Pawel** – Learn about coin free slots and get a free Bingo ticket for the first session only. Casino, Deck 6 Midship

4:00pm-7:00pm **Complimentary Medi-Spa Consultation** With Dr. Janice Cruz. Lotus Spa, Deck 14 Aft

4:30pm-7:15pm *In the Atrium* **Musical Melodies with our Fine Musicians.** Deck 5 Midship

5:00pm **Ballroom Blitz Dance Date (Pre-Recorded)** Wheelhouse Bar, Deck 7 Fwd

5:00pm-7:00pm **Boutiques Preview** – Visit us to learn about the events and activities that will be taking place in the Boutiques during your voyage to Alaska. All Boutiques, Deck 6

5:15pm **Dining Inquiries** Provence Dining Room, Deck 6 Midship

5:45pm **Friends of Dr. Bob and Bill W. Meeting** Hearts & Minds, Deck 7 Midship

Enchanting Evening

6:00pm **LGBT Get-Together (Unhosted)** Wheelhouse Bar, Deck 7 Fwd

6:00pm **movies** **Concert: Bon Jovi Live in Chicago** Lido, Deck 14 Midship

6:30pm **Music and Dancing with Phoenix Rising** Wheelhouse Bar, Deck 7 Fwd

7:00pm **DJ Gonzalo Riff Plays your Favorite Dance Music** Explorers Lounge, Deck 6 Aft

7:30pm **GENERAL EMERGENCY STATIONS**
Guest Muster Drills must be carried out before sailing. ALL GUESTS must attend a general emergency exercise at their designated General Emergency Stations. This exercise is a requirement of law. At the start of the exercise, alarms will sound and broadcasts will be made, calling you to your Muster Stations as indicated on the notice on the back of your stateroom door. Please carry your life jacket with you. Do not wear it, and for safety's sake, do not allow the ties to trail on the deck. The correct method of wearing a life jacket will be demonstrated at the end of muster. Please have your cruise card ready for scanning by ship's personnel and ensure all cell phones are switched off before entering the Muster Stations.

8:00pm **All Aboard Please!** Island Princess sails for Valdez Bay shortly thereafter

8:15pm **Late Guests Drill** – For those guests who have missed the main drill. Please bring your lifejacket with you. Wheelhouse Bar, Deck 7 Fwd

8:30pm **Music and Dancing with Phoenix Rising** Wheelhouse Bar, Deck 7 Fwd

8:30pm **Singles and Solos Get-Together** Crooners Bar, Deck 7 Midship

8:30pm **Welcome Aboard Music and Dancing with Party Band Project 5.** Explorers Lounge, Deck 6 Aft

8:30pm-
Close **Piano Entertainer Wally B** Crooners Bar, Deck 7 Midship

8:45pm-10:30pm **Guitar & Vocal Entertainer Louise McMahon** Bayou Cafe & Steakhouse, Deck 7 Aft

9:00pm **Lotus Spa Grand Raffle** – Win up to \$ 500 in Spa Credits. Not to be missed. Aerobic Studio, Deck 6 Aft

9:15pm **Texas Hold'Em Demo.** Followed by \$1/\$2 No Limit cash game. Casino, Deck 6 Midship

9:30pm **Etty Welcome Aboard Raffle** – Meet your Etty and have a chance to win great prizes. Etty Bar, Deck 6 midship

9:45pm **SHOWTIME: Welcome Aboard Show**
Comedian: **Phil Tag**
Featuring the Island Princess Singers & Dancers. Princess Theater, Deck 7 Fwd

10:00pm-2:00am **Stay and Play** – Slots and Texas Hold'Em table open all night. Casino, Deck 6 Midship

10:00pm-
Onwards **The Wake Show** – Join Mike & Micca, for a light hearted look at tomorrow's events. Channel 21, Stateroom TV

10:00pm **movies** **Movie: Bridge of Spies**
Starring: Tom Hanks, Mark Rylance (PG-13 • 2hrs. 22mins.) Lido Deck 14

10:30pm **Music and Dancing with Phoenix Rising** Wheelhouse Bar, Deck 7 Fwd

10:30pm **The Voice of the Ocean - Audition #1**
Join our Cruise Director's Staff for an opportunity to perform in the Voice of the Ocean Competition. Explorers Lounge, Deck 6 Aft Princess Pick

10:30pm-11:30pm **Happy Hour: Buy any drink under \$10.00 get the second one for \$1.00** – Fun for all with drinks, snacks and entertainment. Explorers Lounge, Deck 6 Aft and Casino Bar, Deck 6 Midship

11:30pm **Welcome Aboard Music and Dancing with Party Band Project 5.** Explorers Lounge, Deck 6 Aft

Midnight **DJ Gonzalo Riff Plays your Favorite Dance Music** Explorers Lounge, Deck 6 Aft

Free USB Thumb Drive!

Purchase your Embarkation Photo set and receive the **Princess souvenir 3D thumb drive FREE** with your Passport to Value coupon!

Photo & Video Gallery • Deck 6 Aft

Welcome Aboard Showtime

Comedian

Phil Tag

Featuring the Island Princess Singers & Dancers.
Hosted by your Cruise Director Mike Witte

9:45pm • Princess Theater, Deck 7 Fwd

All-Inclusive Beverage Package

Enjoy unlimited beverages up to \$10. Only \$49 a day + 15% gratuity! Ask your server for details.

Cocktails • Beer • Wine • Sodas • Specialty Coffees • Shakes • Water Bottles
Plus, 40% discount on bottled wines under \$100

